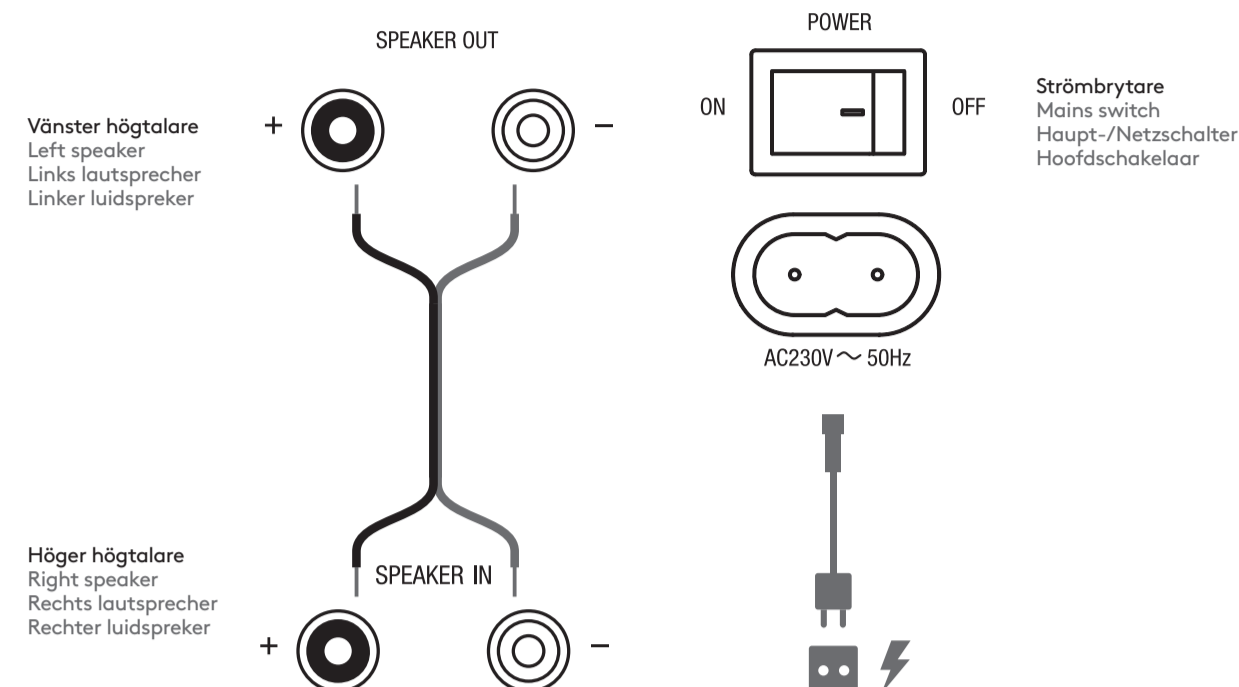
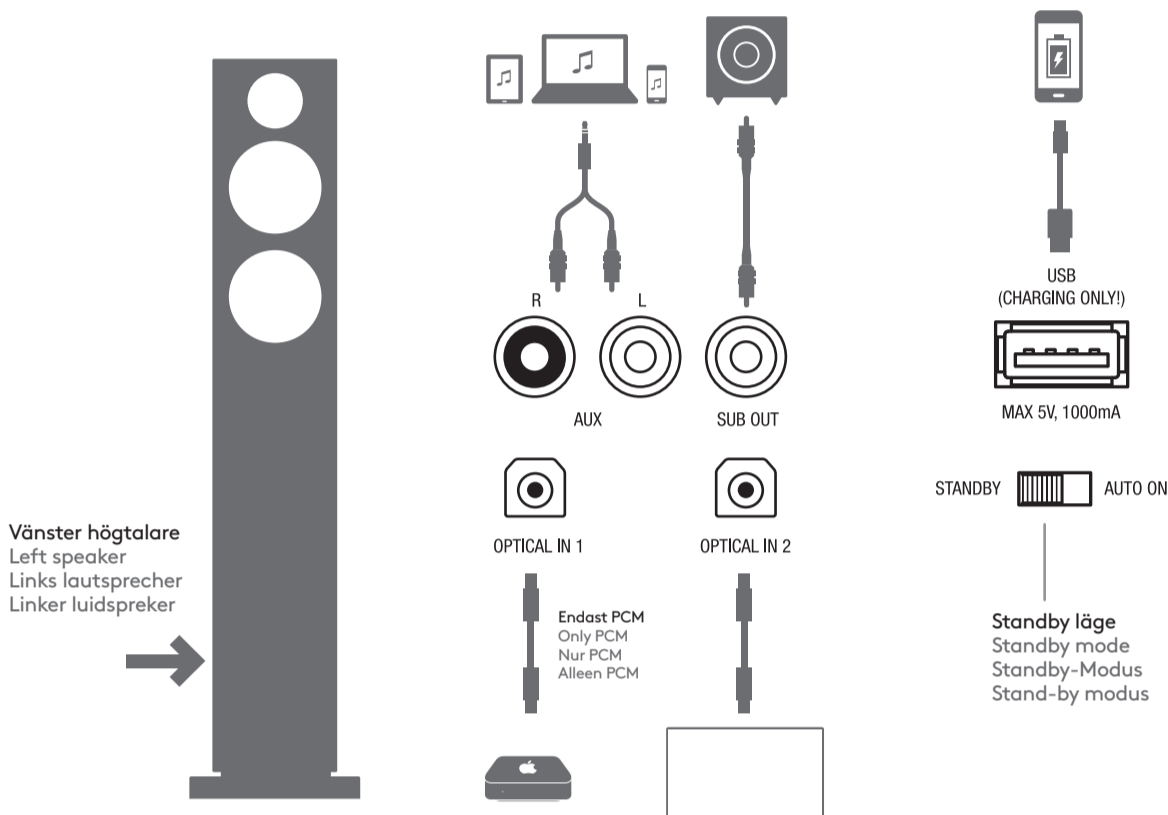




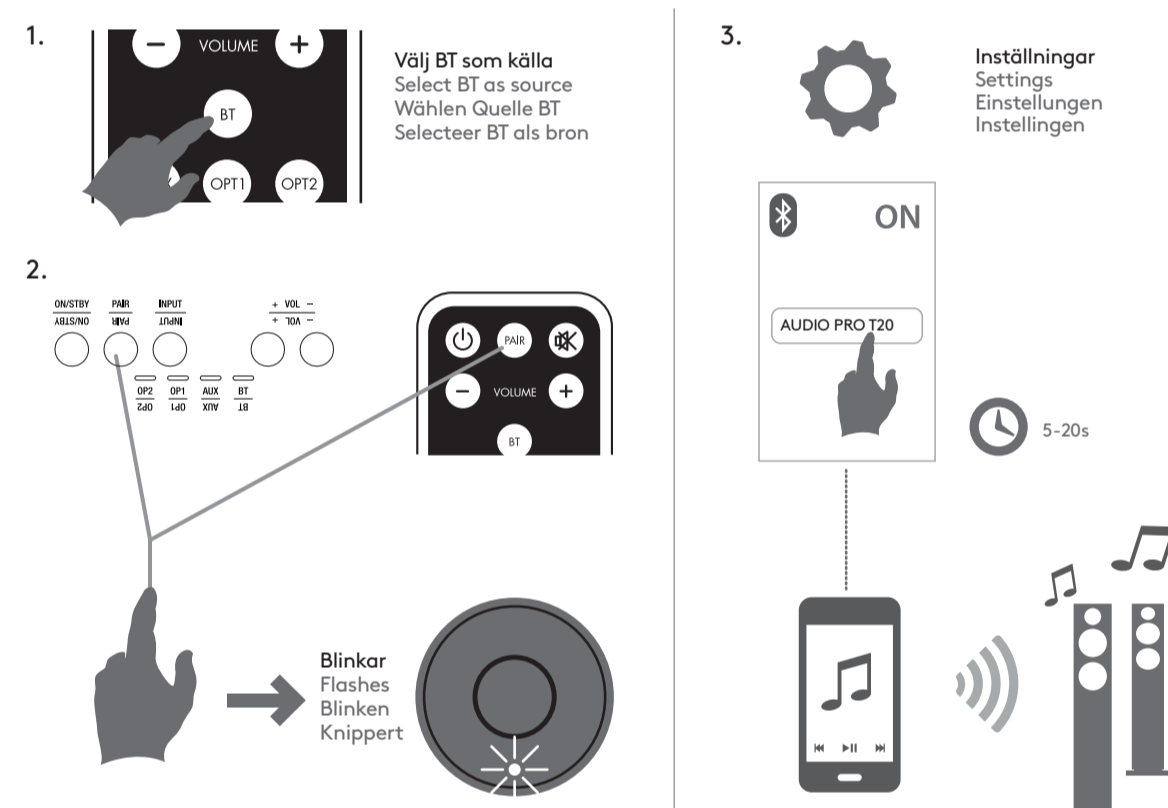
INKOPPLING | CONNECTION | ANSCHLÜSSE | VERBINDING MAKEN



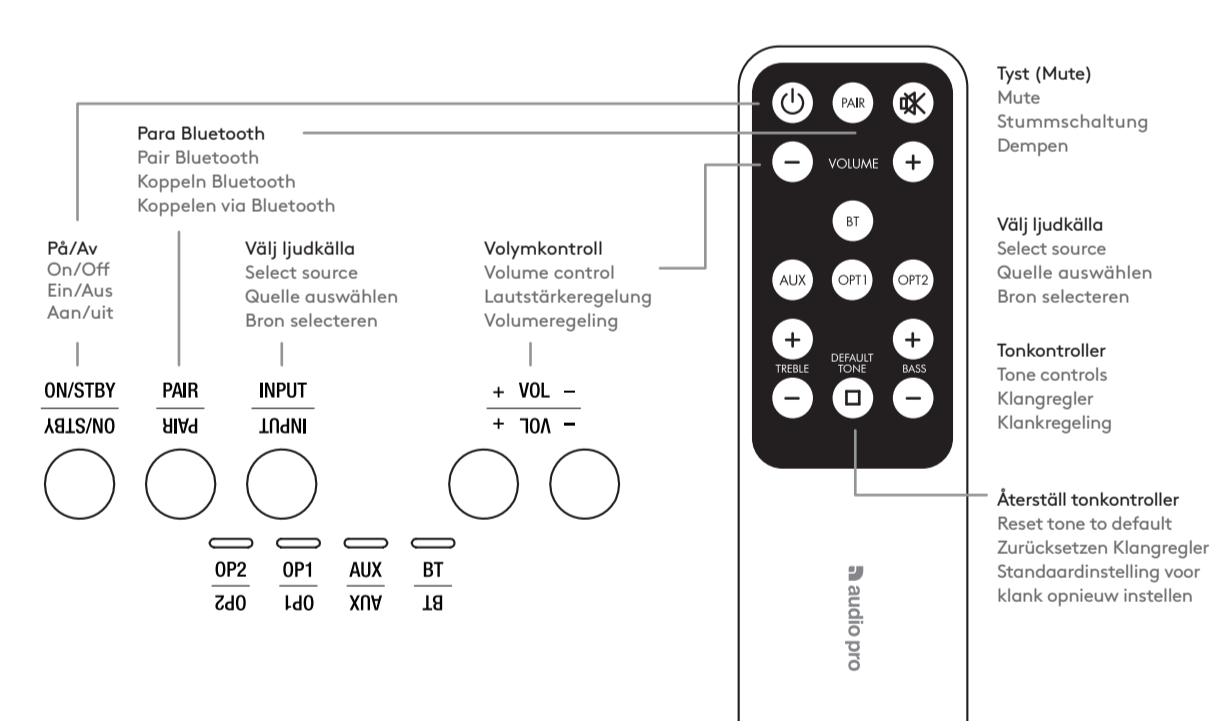
BAKSIDA | REAR VIEW | RÜCKSEITE | ACHTERAANZICHT



PARA | PAIR | KOPPELN | KOPPELEN



KONTROLLER | CONTROLS | SCHALTAFEL | BEDIENINGSELEMENTEN



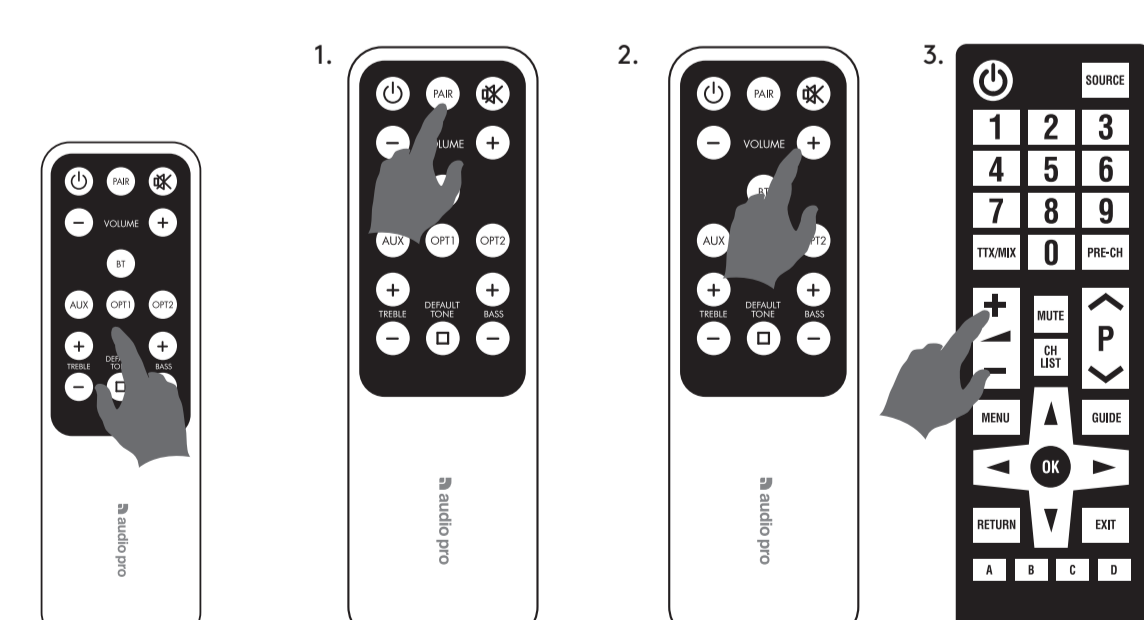
ANVÄNDA ANNAN FJÄRR | USING A DIFFERENT REMOTE
BENÜTZUNG EINER ANDEREN FERNBEDIENUNG | MET EEN ANDERE AFSTANDSBEDIENING

Högtalaren kan lära sig kommando från andra fjärrkontroller (endast IR).

The loudspeaker can be programmed to use commands from other remotes (IR only).

Die Lautsprecher können so programmiert werden, dass sie auch von anderen Fernbedienungen Befehle empfangen (nur Infrarot).

De luidspreker kan worden geprogrammeerd om commando's van andere afstandsbedieningen te gebruiken (alleen IR).

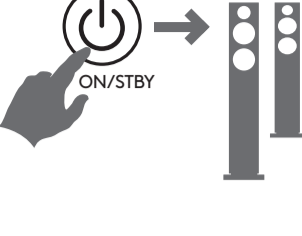


REPETERA STEG 1-3 FÖR VARJE KOMMANDO DU BEHÖVER.
REPEAT STAGES 1-3 FOR EACH OF THE COMMANDS YOU WISH TO TRANSFER.
WIEDERHOLEN SIE DIE SCHRITTE 1 bis 3 FÜR JEDEN BEFEHL, DEN SIE ÜBERTRAGEN MÖCHTEN.
HERVELLEN STADEN 1 - 3 VOOR ELKE COMMISSIE WIL U OVERWEGEN.

STANDBY LÄGE | STANDBY MODE | STANDBY MODUS



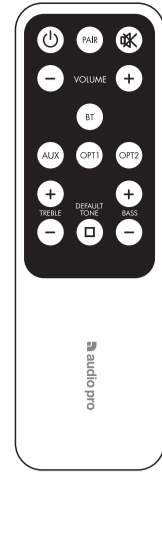
20min > Zzz



Alltid tillgänglig
Always selectable
Immer wählbar
Altijd selecteerbaar



TONKONTROLLER | TONE CONTROLS
KLANGREGELN | KLANKREGELING



BASS +/-:
Justera nivå på basfrekvenser
Adjust bass frequencies
Stellen Bassfrequenzen
Basfrequenties aanpassen

TREBLE +/-:
Justera nivå på diskantfrekvenser
Adjust treble frequencies
Stellen Höhenfrequenzen
Hoge tonen aanpassen

DEFAULT TONE
Återställ till fabriksinställning
Reset to factory setting
Werkeinstellungen zurücksetzen
Fabrieksinstellingen opnieuw instellen

audio pro

© Audio Pro AB Sweden
Audio Pro®, the Audio Pro logotype, the 'a' symbol, and ace-bass® are all registered trademarks of Audio Pro AB, Sweden. All rights reserved. Audio Pro follows a policy of continuous advancement in development. This document contains information that is subject to change without notice.

© Audio Pro AB Sverige. Audio Pro®, Audio Pro logotypen, 'a' symbolen, och ace-bass® är registrerade varumärken av Audio Pro AB, Sverige. Alla rättigheter reserverade. Audio Pro följer en policy om ständig produktutveckling. Detta dokument innehåller information som kan ändras utan föregående meddelande.

All other products and services mentioned may be trademarks or service marks of their respective owners.

Audio Pro, Box 22272, SE-250 24 Helsingborg Sweden

SV: SPECIFIKATIONER

Typ: Aktiv stereo högtalarpär med basreflex
Förstärkare: Digital Klass D förstärkare, 2 x 60W
Diskant: 3/4" soft dome med dubbla kammare
Woofers: 2 x 4 1/2"
Frekvensområde: 32- 25.000Hz
Delningsfrekvens: 2.900Hz
Dimensioner HxBxD: 832 x 190 x 210 mm
Ingångar: Bluetooth standard V4.0 + EDR med apt-X codec och Aux In RCA, 2 x TOSLINK optisk digital (endast PCM)
Utgångar: RCA Sub Out och USB DC OUT /max 5V 1000mA
Energiförbrukning STB/ON: 0.32W/5.1W

INNEHÅLL

1 par Addon T20 högtalare 1 x Strömkabel
1 x Snabbstartsguide 1 x Högtalarkabel
1 x Fjärrkontroll

SYSTEMKRAV

För att kunna utnyttja apt-X® måste sändare (t.ex. mobiltelefon eller surfplatta) vara utrustad med apt-X® teknologi. Annars tillförs inte någon ljudförbättring.

DE: TECHNISCHE DATEN

Typ: Stereolautsprecherbox mit Stromversorgung und Bassreflexbox
Verstärker: Digitalverstärker Klasse D, 2 x 60W
Hochtonlautsprecher: 3/4"-Zoll-Lautsprecher mit Textilhochtonkegel
Tiefertonlautsprecher: 2 x 4 1/2"
Übertragungsbereich: 32 - 25.000 Hz
Übergangsfrequenz: 2.900 Hz
Abmessungen H x B x T: 832 x 190 x 210 mm
Eingänge: Bluetooth-V4.0-Eingang mit EDR und apt-X® Codec, 1 x stereo RCA, 2 x TOSLINK Optische Eingang (nur PCM)
Ausgänge: RCA Sub Out und USB DC OUT/max 5V 1000 mA
Energieverbrauch STB/ON: 0.32W/5.1W

VERPACKUNGSMATERIAL

1 par Addon T20 Lautsprecherbox 1 x Netzanschlusskabel
1 x Schnellstart-Anleitung 1 x Lautsprecherkabel
1 x Fernbedienung

SYSTEMANFORDERUNGEN

Um die apt-X®-Technologie nutzen zu können, muss die Sendeeinrichtung (z. B. das Mobiltelefon oder der Tablet-Computer) über apt-X® verfügen. Ansonsten wird keine Klangverbesserung erzielt.

EN: SPECIFICATIONS

Type: Powered stereo speaker system with bass reflex
Amplifier: Digital Class D amplifier, 2 x 60W
Tweeter: 3/4" textile dome tweeter, double chamber
Woofers: 2 x 4 1/2"
Frequency range: 32- 25.000Hz
Crossover frequency: 2.900Hz
Dimensions HxWxD: 832 x 190 x 210 mm
Inputs: Bluetooth standard V4.0 + EDR with apt-X® codec and Aux In RCA, 2 x TOSLINK optical digital (only PCM)
Outputs: RCA Sub Out and USB DC OUT/max 5V 1000
Power consumption STB/ON: 0.32W/5.1W

BOX CONTENTS

1 pair Addon T20 Speaker 1 x Power cable
1 x Quick Start Guide 1 x Speaker cable
1 x Remote control

SYSTEM REQUIREMENTS

In order to be able to utilize apt-X®, the device (e.g. mobile telephone or tablet) must have apt-X® installed. Otherwise no sound enhancement will be achieved.

NL: SPECIFICATIES

Type: Aangedreven stereoluidsprekersysteem met basreflex
Versterker: digitale versterker uit klasse D, 2 x 60 watt
Tweeter: bolvormige tweeter van 3/4 inch met textiel, dubbele kamer
Woofers: 2 x 4 1/2 inch
Frequentiebereik: 32 - 25.000 Hz
Overstapfrequentie: 2.900 Hz
Afmetingen (h x b x d): 832 x 190 x 210 mm
Ingangen: Bluetooth-standaard V4.0 + EDR met apt-X®-codec en Aux In RCA, 2 optische digitale TOSLINK (alleen PCM)
Utgangen: RCA-subuitgang en USB-uitgang (gelijkstroom)/max. 5 V, 1000 Energieverbruik STB/ON: 0.32W/5.1W

INHOUD VAN DE DOOS

1 x Addon T20-luidspreker 1 x voedingskabel
1 x beknopte handleiding 1 x luidsprekerkabel
1 x afstandsbediening

SYSTEMEISEN

Om apt-X® te kunnen gebruiken, moet apt-X® op het apparaat (bijv. mobiele telefoon of tablet) zijn geïnstalleerd. Anders zal geen geluidsverbetering worden behaald.

FCC

THIS DEVICE COMPLIES WITH PART 15 OF THE FCC RULES. OPERATION IS SUBJECT TO THE FOLLOWING TWO CONDITIONS: 1 - THIS DEVICE MAY NOT CAUSE HARMFUL INTERFERENCE. 2 - THIS DEVICE MUST ACCEPT INTERFERENCE RECEIVED, INCLUDING INTERFERENCE THAT MAY CAUSE UNDESIRABLE OPERATION.
MODEL: T20. FCC ID: 2AGNC - T20

FCC WARNING

Any Changes or modifications not expressly approved by the party responsible for compliance could void the user's authority to operate the equipment. This device complies with part 15 of the FCC Rules. Operation is subject to the following two conditions: (1) This device may not cause harmful interference, and (2) this device must accept any interference received, including interference that may cause undesired operation. This equipment complies with FCC radiation exposure limits set forth for an uncontrolled environment. Note: This equipment has been tested and found to comply with the limits for a Class B digital device, pursuant to part 15 of the FCC Rules. These limits are designed to provide reasonable protection against harmful interference in a residential installation. This equipment generates, uses and can radiate radio frequency energy and, if not installed and used in accordance with the instructions, may cause harmful interference to radio communications. However, there is no guarantee that interference will not occur in a particu-

lar installation. If this equipment does cause harmful interference to radio or television reception, which can be determined by turning the equipment off and on, the user is encouraged to try to correct the interference by one or more of the following measures:

- Reorient or relocate the receiving antenna.
- Increase the separation between the equipment and receiver.
- Connect the equipment into an outlet on a circuit different

IC

This device complies with Industry Canada licence-exempt RSS standard(s). Operation is subject to the following two conditions: (1) This device may not cause interference, and (2) This device must accept any interference, including interference that may cause undesired operation of the device.

Le présent appareil est conforme aux CNR de l'Industrie Canada applicables aux appareils radio exempts de licence. L'exploitation est autorisée aux deux conditions suivantes:

- (1) l'appareil ne doit pas produire de brouillage, et
- (2) l'utilisateur de l'appareil doit accepter tout brouillage radioélectrique subi, même si le brouillage est susceptible d'en compromettre le fonctionnement.



SV: Den pilförsedda blixtsymbolen i en liksidig triangel är avsedd att varna användaren för förekomsten av isolerad "farlig spänning" innanför produktens hölje. Spänningen kan vara så hög att människor riskerar att utsättas för elektriska stötar.

EN: The lightning flash with arrowhead symbol, within an equilateral triangle, is intended to alert the user to the presence of uninsulated "dangerous voltage" within the product's enclosure that may be of sufficient magnitude to constitute a risk of electric shock to persons.

DE: Das Blitzsymbol mit Pfeilspitze im gleichseitigen Dreieck ist der Hinweis auf stromführende Teile im Geräteinneren, bei deren Berührung die Gefahr eines lebensgefährlichen Stromschlags droht.

NL: Het symbol met de bliksemschicht in een gelijkbenige driehoek is bedoeld om de gebruiker te waarschuwen voor de aanwezigheid van niet-geïsoleerde 'gevaarlijke spanning' in de behuizing van het product. Deze kan voldoende zijn om een elektrische schok bij personen te veroorzaken.



SV: Utopstrecknet i en liksidig triangel är avsett att uppmärksamma användaren på att det finns viktiga instruktioner för bruk och underhåll (service) i det referensmaterial som medföljer utrustningen.

EN: The exclamation point within an equilateral triangle is intended to alert the user to the presence of important operating and maintenance (servicing) instructions in the literature accompanying the appliance.

DE: Das Ausrufezeichen im gleichseitigen Dreieck soll auf wichtige Bedienungs- und Wartungs-Hinweise in dieser Bedienungsanleitung aufmerksam machen.

NL: Het uitroepteken in een gelijkbenige driehoek is bedoeld om de gebruiker te waarschuwen voor de aanwezigheid van belangrijke bedienings- en onderhoudsinstructies in de documenten die bij het apparaat worden geleverd.

VIKTIGA SÄKERHETSFORESKRIFTER

1. Läs igenom dessa anvisningar.
2. Spara dessa anvisningar.
3. Respektera samtliga varningar.
4. Följ samtliga anvisningar.
5. Använd ej produkten i närheten av vatten.
6. Rengör endast med torr trasa.
7. Drifttemperatur (°C) 5-40
8. Luftfuktighet (%) ingen kondens. 30-90
9. Blockera ej ventilationsöppningarna. Följ tillverkarens anvisningar när du installerar produkten.
10. Minsta avstånd runt apparaten för tillräcklig ventilation, 10cm.
11. Ventilationen får inte hindras genom att täcka över ventilationsöppningarna med föremål såsom tändningar, dukar, gardiner m.m.
12. Installera ej produkten nära värmeväxlare såsom element, varmluftsutsläpp, spisar eller annan värmeledande utrustning (t.ex. förstärkare).
13. Skydda nätsladden från tramp- och klämskador, i synnerhet vid avslutningen till städkontakten, vid genutret och där sladdar får stå i produkten.
14. Använd endast den extrautrustning och de tillbehör som tillverkaren rekommenderar.
15. Drag ut produktens nätkontakt vid oavsådder eller då produkten ej används under längre tid.
16. All service ska utföras av särskilt utbildad servicepersonal. Service utföras på produkten har utsatts för skada. Exempel är skador på nätsladden eller dess kontakt, att vätska spillts eller främmande föremål kommit in i produkten, att produkten utsatts för regn eller fukt, att den inte fungerar normalt eller att den har tappats.
17. Skador som erfordrar kontakt
18. Drag ut produktens nätkontakt ur vägguttaget och låt särskilt utbildad servicepersonal ombesörja service då något av följande inträffar:
A. Om nätsladden eller dess kontakt skadats,
B. Om vätska spillts eller främmande föremål kommit in i produkten,
C. Om produkten utsatts för regn eller vatten,
D. Om produkten ej fungerar normalt då den används enligt bruksanvisningen. Justera enbart med de regler som omfattas av denna under längre tid. Felaktig justering med andra redskap kan orsaka skador som ofta fördrar omfattande arbete av särskilt utbildad reparatör för att få utrustningen att fungera normalt igen.
E. Om produkten har tappats eller skadats på något sätt, om produktens prestanda förändras påtagligt indikerar detta behov av service.
19. Förförande av föremål och vätska
Inga som helst föremål får införas i produkten genom dess öppningar, eftersom de kan komma i beröring med komponenter som står under farlig spänning eller orsaka kortslutning, vilket kan vålla brand eller elektrisk stöt. Produkten får ej utsättas för vätskeblåsa eller stänk. Inga vätskefylla föremål som t.ex. droppvatten för ställas på utrustningen. Inga öppna låg, t.ex. tända strömljus m.m. får aldrig placeras på apparaten.
20. Batterier
- Visa alltid miljöhänsyn och följ lokala bestämmelser vid avfallshandtering av batterier.
- Batterier installeras på fjärrkontrollen för inte utsättas för överdriven värme, såsom solsken, eld eller liknande.
19. Se till att det finns tillräcklig ventilation om du installerar produkten i kringbyggda utrymmen, exempelvis bokhyllor eller rack. Lämna ett avstånd på 20 cm över och på ömse sidor om produkten och 10 cm bakom den. Bakkanten av hyllplan eller skiva som ligger närmast ovanför produkten ska drivas fram så att det uppstår en glipa på cirka 10 cm till den bakre plattan eller väggen. På så vis bildas en utsugliknande kanal där uppvärmd luft kan strömma upp.
20. Använd endast medföljande strömsladd.

IMPORTANT SAFETY INSTRUCTIONS

1. Read these instructions.
2. Keep these instructions.
3. Follow all warnings.
4. Read all instructions.
5. Do not use this apparatus near water.
6. Clean only with dry cloth.
7. Operating temperature (°C) 5-40
8. Humidity (%) no condensation 30-90
9. Do not block any ventilation openings. Install in accordance with the manufacturer's instructions.
10. Minimum distances around the apparatus for sufficient ventilation, 10cm.
11. The ventilation should not be impeded by covering the ventilation openings with items, such as newspapers, table-cloths, curtains, etc.
12. Protect the power cord from being walked on or pinched particularly at plugs, convenience receptacles, and the point where they exit from the apparatus.
13. Only use attachments/accessories specified by the manufacturer.
14. Unplug this apparatus during lightning storms or when unused for long periods of time.
15. Refer all servicing to qualified service personnel. Servicing is required when the apparatus has been damaged in any way, such as power-supply cord or plug is damaged, liquid has been spilled or objects have fallen into the apparatus, the apparatus has been exposed to rain or moisture, does not operate normally, or has been dropped.
16. Damage Requiring Service
Unplug the apparatus from the wall outlet and refer servicing to qualified service personnel under the following conditions:
A. When the power-supply cord or plug is damaged,
B. If liquid has been spilled, or objects have fallen into

the apparatus,
C. If the apparatus has been exposed to rain or water,
D. If the apparatus does not operate normally by following the operating instructions. Adjust only those controls that are covered by the adjusting instructions as an improper adjustment of any kind into any way, and
F. When the apparatus exhibits a distinct change in performance this indicates a need for service.
17. Object and Liquid Entry
Never push objects of any kind into the apparatus through openings as they may touch dangerous voltage points or short-out parts that could result in a fire or electric shock. The apparatus shall not be exposed to dripping or splashing and no objects filled with liquids, such as vases shall be placed on the apparatus. No naked flame sources such as lit candles etc., should never be placed on the apparatus.
18. Batteries
- Always consider the environmental issues and follow local regulations when disposing of batteries.
- Battery installed in remote shall not be exposed to excessive heat such as sunshine, fire or the like.
E. If the apparatus has been dropped or damaged in any way, and
F. When the apparatus exhibits a distinct change in performance this indicates a need for service.
17. Object and Liquid Entry
Never push objects of any kind into the apparatus through openings as they may touch dangerous voltage points or short-out parts that could result in a fire or electric shock. The apparatus shall not be exposed to dripping or splashing and no objects filled with liquids, such as vases shall be placed on the apparatus. No naked flame sources such as lit candles etc., should never be placed on the apparatus.
18. Batteries
- Always consider the environmental issues and follow local regulations when disposing of batteries.
- Battery installed in remote shall not be exposed to excessive heat such as sunshine, fire or the like.
E. If the apparatus has been dropped or damaged in any way, and
F. When the apparatus exhibits a distinct change in performance this indicates a need for service.
17. Object and Liquid Entry
Never push objects of any kind into the apparatus through openings as they may touch dangerous voltage points or short-out parts that could result in a fire or electric shock. The apparatus shall not be exposed to dripping or splashing and no objects filled with liquids, such as vases shall be placed on the apparatus. No naked flame sources such as lit candles etc., should never be placed on the apparatus.
18. Batteries
- Always consider the environmental issues and follow local regulations when disposing of batteries.
- Battery installed in remote shall not be exposed to excessive heat such as sunshine, fire or the like.
E. If the apparatus has been dropped or damaged in any way, and
F. When the apparatus exhibits a distinct change in performance this indicates a need for service.
17. Object and Liquid Entry
Never push objects of any kind into the apparatus through openings as they may touch dangerous voltage points or short-out parts that could result in a fire or electric shock. The apparatus shall not be exposed to dripping or splashing and no objects filled with liquids, such as vases shall be placed on the apparatus. No naked flame sources such as lit candles etc., should never be placed on the apparatus.
18. Batteries
- Always consider the environmental issues and follow local regulations when disposing of batteries.
- Battery installed in remote shall not be exposed to excessive heat such as sunshine, fire or the like.
E. If the apparatus has been dropped or damaged in any way, and
F. When the apparatus exhibits a distinct change in performance this indicates a need for service.
17. Object and Liquid Entry
Never push objects of any kind into the apparatus through openings as they may touch dangerous voltage points or short-out parts that could result in a fire or electric shock. The apparatus shall not be exposed to dripping or splashing and no objects filled with liquids, such as vases shall be placed on the apparatus. No naked flame sources such as lit candles etc., should never be placed on the apparatus.
18. Batteries
- Always consider the environmental issues and follow local regulations when disposing of batteries.
- Battery installed in remote shall not be exposed to excessive heat such as sunshine, fire or the like.
E. If the apparatus has been dropped or damaged in any way, and
F. When the apparatus exhibits a distinct change in performance this indicates a need for service.
17. Object and Liquid Entry
Never push objects of any kind into the apparatus through openings as they may touch dangerous voltage points or short-out parts that could result in a fire or electric shock. The apparatus shall not be exposed to dripping or splashing and no objects filled with liquids, such as vases shall be placed on the apparatus. No naked flame sources such as lit candles etc., should never be placed on the apparatus.
18. Batteries
- Always consider the environmental issues and follow local regulations when disposing of batteries.
- Battery installed in remote shall not be exposed to excessive heat such as sunshine, fire or the like.
E. If the apparatus has been dropped or damaged in any way, and
F. When the apparatus exhibits a distinct change in performance this indicates a need for service.
17. Object and Liquid Entry
Never push objects of any kind into the apparatus through openings as they may touch dangerous voltage points or short-out parts that could result in a fire or electric shock. The apparatus shall not be exposed to dripping or splashing and no objects filled with liquids, such as vases shall be placed on the apparatus. No naked flame sources such as lit candles etc., should never be placed on the apparatus.
18. Batteries
- Always consider the environmental issues and follow local regulations when disposing of batteries.
- Battery installed in remote shall not be exposed to excessive heat such as sunshine, fire or the like.
E. If the apparatus has been dropped or damaged in any way, and
F. When the apparatus exhibits a distinct change in performance this indicates a need for service.
17. Object and Liquid Entry
Never push objects of any kind into the apparatus through openings as they may touch dangerous voltage points or short-out parts that could result in a fire or electric shock. The apparatus shall not be exposed to dripping or splashing and no objects filled with liquids, such as vases shall be placed on the apparatus. No naked flame sources such as lit candles etc., should never be placed on the apparatus.
18. Batteries
- Always consider the environmental issues and follow local regulations when disposing of batteries.
- Battery installed in remote shall not be exposed to excessive heat such as sunshine, fire or the like.
E. If the apparatus has been dropped or damaged in any way, and
F. When the apparatus exhibits a distinct change in performance this indicates a need for service.
17. Object and Liquid Entry
Never push objects of any kind into the apparatus through openings as they may touch dangerous voltage points or short-out parts that could result in a fire or electric shock. The apparatus shall not be exposed to dripping or splashing and no objects filled with liquids, such as vases shall be placed on the apparatus. No naked flame sources such as lit candles etc., should never be placed on the apparatus.
18. Batteries
- Always consider the environmental issues and follow local regulations when disposing of batteries.
- Battery installed in remote shall not be exposed to excessive heat such as sunshine, fire or the like.
E. If the apparatus has been dropped or damaged in any way, and
F. When the apparatus exhibits a distinct change in performance this indicates a need for service.
17. Object and Liquid Entry
Never push objects of any kind into the apparatus through openings as they may touch dangerous voltage points or short-out parts that could result in a fire or electric shock. The apparatus shall not be exposed to dripping or splashing and no objects filled with liquids, such as vases shall be placed on the apparatus. No naked flame sources such as lit candles etc., should never be placed on the apparatus.
18. Batteries
- Always consider the environmental issues and follow local regulations when disposing of batteries.
- Battery installed in remote shall not be exposed to excessive heat such as sunshine, fire or the like.
E. If the apparatus has been dropped or damaged in any way, and
F. When the apparatus exhibits a distinct change in performance this indicates a need for service.
17. Object and Liquid Entry
Never push objects of any kind into the apparatus through openings as they may touch dangerous voltage points or short-out parts that could result in a fire or electric shock. The apparatus shall not be exposed to dripping or splashing and no objects filled with liquids, such as vases shall be placed on the apparatus. No naked flame sources such as lit candles etc., should never be placed on the apparatus.
18. Batteries
- Always consider the environmental issues and follow local regulations when disposing of batteries.
- Battery installed in remote shall not be exposed to excessive heat such as sunshine, fire or the like.
E. If the apparatus has been dropped or damaged in any way, and
F. When the apparatus exhibits a distinct change in performance this indicates a need for service.
17. Object and Liquid Entry
Never push objects of any kind into the apparatus through openings as they may touch dangerous voltage points or short-out parts that could result in a fire or electric shock. The apparatus shall not be exposed to dripping or splashing and no objects filled with liquids, such as vases shall be placed on the apparatus. No naked flame sources such as lit candles etc., should never be placed on the apparatus.
18. Batteries
- Always consider the environmental issues and follow local regulations when disposing of batteries.
- Battery installed in remote shall not be exposed to excessive heat such as sunshine, fire or the like.
E. If the apparatus has been dropped or damaged in any way, and
F. When the apparatus exhibits a distinct change in performance this indicates a need for service.
17. Object and Liquid Entry
Never push objects of any kind into the apparatus through openings as they may touch dangerous voltage points or short-out parts that could result in a fire or electric shock. The apparatus shall not be exposed to dripping or splashing and no objects filled with liquids, such as vases shall be placed on the apparatus. No naked flame sources such as lit candles etc., should never be placed on the apparatus.
18. Batteries
- Always consider the environmental issues and follow local regulations when disposing of batteries.
- Battery installed in remote shall not be exposed to excessive heat such as sunshine, fire or the like.
E. If the apparatus has been dropped or damaged in any way, and
F. When the apparatus exhibits a distinct change in performance this indicates a need for service.
17. Object and Liquid Entry
Never push objects of any kind into the apparatus through openings as they may touch dangerous voltage points or short-out parts that could result in a fire or electric shock. The apparatus shall not be exposed to dripping or splashing and no objects filled with liquids, such as vases shall be placed on the apparatus. No naked flame sources such as lit candles etc., should never be placed on the apparatus.
18. Batteries
- Always consider the environmental issues and follow local regulations when disposing of batteries.
- Battery installed in remote shall not be exposed to excessive heat such as sunshine, fire or the like.
E. If the apparatus has been dropped or damaged in any way, and
F. When the apparatus exhibits a distinct change in performance this indicates a need for service.
17. Object and Liquid Entry
Never push objects of any kind into the apparatus through openings as they may touch dangerous voltage points or short-out parts that could result in a fire or electric shock. The apparatus shall not be exposed to dripping or splashing and no objects filled with liquids, such as vases shall be placed on the apparatus. No naked flame sources such as lit candles etc., should never be placed on the apparatus.
18. Batteries
- Always consider the environmental issues and follow local regulations when disposing of batteries.
- Battery installed in remote shall not be exposed to excessive heat such as sunshine, fire or the like.
E. If the apparatus has been dropped or damaged in any way, and
F. When the apparatus exhibits a distinct change in performance this indicates a need for service.
17. Object and Liquid Entry
Never push objects of any kind into the apparatus through openings as they may touch dangerous voltage points or short-out parts that could result in a fire or electric shock. The apparatus shall not be exposed to dripping or splashing and no objects filled with liquids, such as vases shall be placed on the apparatus. No naked flame sources such as lit candles etc., should never be placed on the apparatus.
18. Batteries
- Always consider the environmental issues and follow local regulations when disposing of batteries.
- Battery installed in remote shall not be exposed to excessive heat such as sunshine, fire or the like.
E. If the apparatus has been dropped or damaged in any way, and
F. When the apparatus exhibits a distinct change in performance this indicates a need for service.
17. Object and Liquid Entry
Never push objects of any kind into the apparatus through openings as they may touch dangerous voltage points or short-out parts that could result in a fire or electric shock. The apparatus shall not be exposed to dripping or splashing and no objects filled with liquids, such as vases shall be placed on the apparatus. No naked flame sources such as lit candles etc., should never be placed on the apparatus.
18. Batteries
- Always consider the environmental issues and follow local regulations when disposing of batteries.
- Battery installed in remote shall not be exposed to excessive heat such as sunshine, fire or the like.
E. If the apparatus has been dropped or damaged in any way, and
F. When the apparatus exhibits a distinct change in performance this indicates a need for service.
17. Object and Liquid Entry
Never push objects of any kind into the apparatus through openings as they may touch dangerous voltage points or short-out parts that could result in a fire or electric shock. The apparatus shall not be exposed to dripping or splashing and no objects filled with liquids, such as vases shall be placed on the apparatus. No naked flame sources such as lit candles etc., should never be placed on the apparatus.
18. Batteries
- Always consider the environmental issues and follow local regulations when disposing of batteries.
- Battery installed in remote shall not be exposed to excessive heat such as sunshine, fire or the like.
E. If the apparatus has been dropped or damaged in any way, and
F. When the apparatus exhibits a distinct change in performance this indicates a need for service.
17. Object and Liquid Entry
Never push objects of any kind into the apparatus through openings as they may touch dangerous voltage points or short-out parts that could result in a fire or electric shock. The apparatus shall not be exposed to dripping or splashing and no objects filled with liquids, such as vases shall be placed on the apparatus. No naked flame sources such as lit candles etc., should never be placed on the apparatus.
18. Batteries
- Always consider the environmental issues and follow local regulations when disposing of batteries.
- Battery installed in remote shall not be exposed to excessive heat such as sunshine, fire or the like.
E. If the apparatus has been dropped or damaged in any way, and
F. When the apparatus exhibits a distinct change in performance this indicates a need for service.
17. Object and Liquid Entry
Never push objects of any kind into the apparatus through openings as they may touch dangerous voltage points or short-out parts that could result in a fire or electric shock. The apparatus shall not be exposed to dripping or splashing and no objects filled with liquids, such as vases shall be placed on the apparatus. No naked flame sources such as lit candles etc., should never be placed on the apparatus.
18. Batteries
- Always consider the environmental issues and follow local regulations when disposing of batteries.
- Battery installed in remote shall not be exposed to excessive heat such as sunshine, fire or the like.
E. If the apparatus has been dropped or damaged in any way, and
F. When the apparatus exhibits a distinct change in performance this indicates a need for service.
17. Object and Liquid Entry
Never push objects of any kind into the apparatus through openings as they may touch dangerous voltage points or short-out parts that could result in a fire or electric shock. The apparatus shall not be exposed to dripping or splashing and no objects filled with liquids, such as vases shall be placed on the apparatus. No naked flame sources such as lit candles etc., should never be placed on the apparatus.
18. Batteries
- Always consider the environmental issues and follow local regulations when disposing of batteries.
- Battery installed in remote shall not be exposed to excessive heat such as sunshine, fire or the like.
E. If the apparatus has been dropped or damaged in any way, and
F. When the apparatus exhibits a distinct change in performance this indicates a need for service.
17. Object and Liquid Entry
Never push objects of any kind into the apparatus through openings as they may touch dangerous voltage points or short-out parts that could result in a fire or electric shock. The apparatus shall not be exposed to dripping or splashing and no objects filled with liquids, such as vases shall be placed on the apparatus. No naked flame sources such as lit candles etc., should never be placed on the apparatus.
18. Batteries
- Always consider the environmental issues and follow local regulations when disposing of batteries.
- Battery installed in remote shall not be exposed to excessive heat such as sunshine, fire or the like.
E. If the apparatus has been dropped or damaged in any way, and
F. When the apparatus exhibits a distinct change in performance this indicates a need for service.
17. Object and Liquid Entry
Never push objects of any kind into the apparatus through openings as they may touch dangerous voltage points or short-out parts that could result in a fire or electric shock. The apparatus shall not be exposed to dripping or splashing and no objects filled with liquids, such as vases shall be placed on the apparatus. No naked flame sources such as lit candles etc., should never be placed on the apparatus.
18. Batteries
- Always consider the environmental issues and follow local regulations when disposing of batteries.
- Battery installed in remote shall not be exposed to excessive heat such as sunshine, fire or the like.
E. If the apparatus has been dropped or damaged in any way, and
F. When the apparatus exhibits a distinct change in performance this indicates a need for service.
17. Object and Liquid Entry
Never push objects of any kind into the apparatus through openings as they may touch dangerous voltage points or short-out parts that could result in a fire or electric shock. The apparatus shall not be exposed to dripping or splashing and no objects filled with liquids, such as vases shall be placed on the apparatus. No naked flame sources such as lit candles etc., should never be placed on the apparatus.
18. Batteries
- Always consider the environmental issues and follow local regulations when disposing of batteries.
- Battery installed in remote shall not be exposed to excessive heat such as sunshine, fire or the like.
E. If the apparatus has been dropped or damaged in any way, and
F. When the apparatus exhibits a distinct change in performance this indicates a need for service.
17. Object and Liquid Entry
Never push objects of any kind into the apparatus through openings as they may touch dangerous voltage points or short-out parts that could result in a fire or electric shock. The apparatus shall not be exposed to dripping or splashing and no objects filled with liquids, such as vases shall be placed on the apparatus. No naked flame sources such as lit candles etc., should never be placed on the apparatus.
18. Batteries
- Always consider the environmental issues and follow local regulations when disposing of batteries.
- Battery installed in remote shall not be exposed to excessive heat such as sunshine, fire or the like.
E. If the apparatus has been dropped or damaged in any way, and
F. When the apparatus exhibits a distinct change in performance this indicates a need for service.
17. Object and Liquid Entry
Never push objects of any kind into the apparatus through openings as they may touch dangerous voltage points or short-out parts that could result in a fire or electric shock. The apparatus shall not be exposed to dripping or splashing and no objects filled with liquids, such as vases shall be placed on the apparatus. No naked flame sources such as lit candles etc., should never be placed on the apparatus.
18. Batteries
- Always consider the environmental issues and follow local regulations when disposing of batteries.
- Battery installed in remote shall not be exposed to excessive heat such as sunshine, fire or the like.
E. If the apparatus has been dropped or damaged in any way, and
F. When the apparatus exhibits a distinct change in performance this indicates a need for service.
17. Object and Liquid Entry
Never push objects of any kind into the apparatus through openings as they may touch dangerous voltage points or short-out parts that could result in a fire or electric shock. The apparatus shall not be exposed to dripping or splashing and no objects filled with liquids, such as vases shall be placed on the apparatus. No naked flame sources such as lit candles etc., should never be placed on the apparatus.
18. Batteries
- Always consider the environmental issues and follow local regulations when disposing of batteries.
- Battery installed in remote shall not be exposed to excessive heat such as sunshine, fire or the like.
E. If the apparatus has been dropped or damaged in any way, and
F. When the apparatus exhibits a distinct change in performance this indicates a need for service.
17. Object and Liquid Entry
Never push objects of any kind into the apparatus through openings as they may touch dangerous voltage points or short-out parts that could result in a fire or electric shock. The apparatus shall not be exposed to dripping or splashing and no objects filled with liquids, such as vases shall be placed on the apparatus. No naked flame sources such as lit candles etc., should never be placed on the apparatus.
18. Batteries
- Always consider the environmental issues and follow local regulations when disposing of batteries.
- Battery installed in remote shall not be exposed to excessive heat such as sunshine, fire or the like.
E. If the apparatus has been dropped or damaged in any way, and
F. When the apparatus exhibits a distinct change in performance this indicates a need for service.
17. Object and Liquid Entry
Never push objects of any kind into the apparatus through openings as they may touch dangerous voltage points or short-out parts that could result in a fire or electric shock. The apparatus shall not be exposed to dripping or splashing and no objects filled with liquids, such as vases shall be placed on the apparatus. No naked flame sources such as lit candles etc., should never be placed on the apparatus.
18. Batteries
- Always consider the environmental issues and follow local regulations when disposing of batteries.
- Battery installed in remote shall not be exposed to excessive heat such as sunshine, fire or the like.
E. If the apparatus has been dropped or damaged in any way, and
F. When the apparatus exhibits a distinct change in performance this indicates a need for service.
17. Object and Liquid Entry
Never push objects of any kind into the apparatus through openings as they may touch dangerous voltage points or short-out parts that could result in a fire or electric shock. The apparatus shall not be exposed to dripping or splashing and no objects filled with liquids, such as vases shall be placed on the apparatus. No naked flame sources such as lit candles etc., should never be placed on the apparatus.
18. Batteries
- Always consider the environmental issues and follow local regulations when disposing of batteries.
- Battery installed in remote shall not be exposed to excessive heat such as sunshine, fire or the like.
E. If the apparatus has been dropped or damaged in any way, and
F. When the apparatus exhibits a distinct change in performance this indicates a need for service.
17. Object and Liquid Entry
Never push objects of any kind into the apparatus through openings as they may touch dangerous voltage points or short-out parts that could result in a fire or electric shock. The apparatus shall not be exposed to dripping or splashing and no objects filled with liquids, such as vases shall be placed on the apparatus. No naked flame sources such as lit candles etc., should never be placed on the apparatus.
18. Batteries
- Always consider the environmental issues and follow local regulations when disposing of batteries.
- Battery installed in remote shall not be exposed to excessive heat such as sunshine, fire or the like.
E. If the apparatus has been dropped or damaged in any way, and
F. When the apparatus exhibits a distinct change in performance this indicates a need for service.
17. Object and Liquid Entry
Never push objects of any kind into the apparatus through openings as they may touch dangerous voltage points or short-out parts that could result